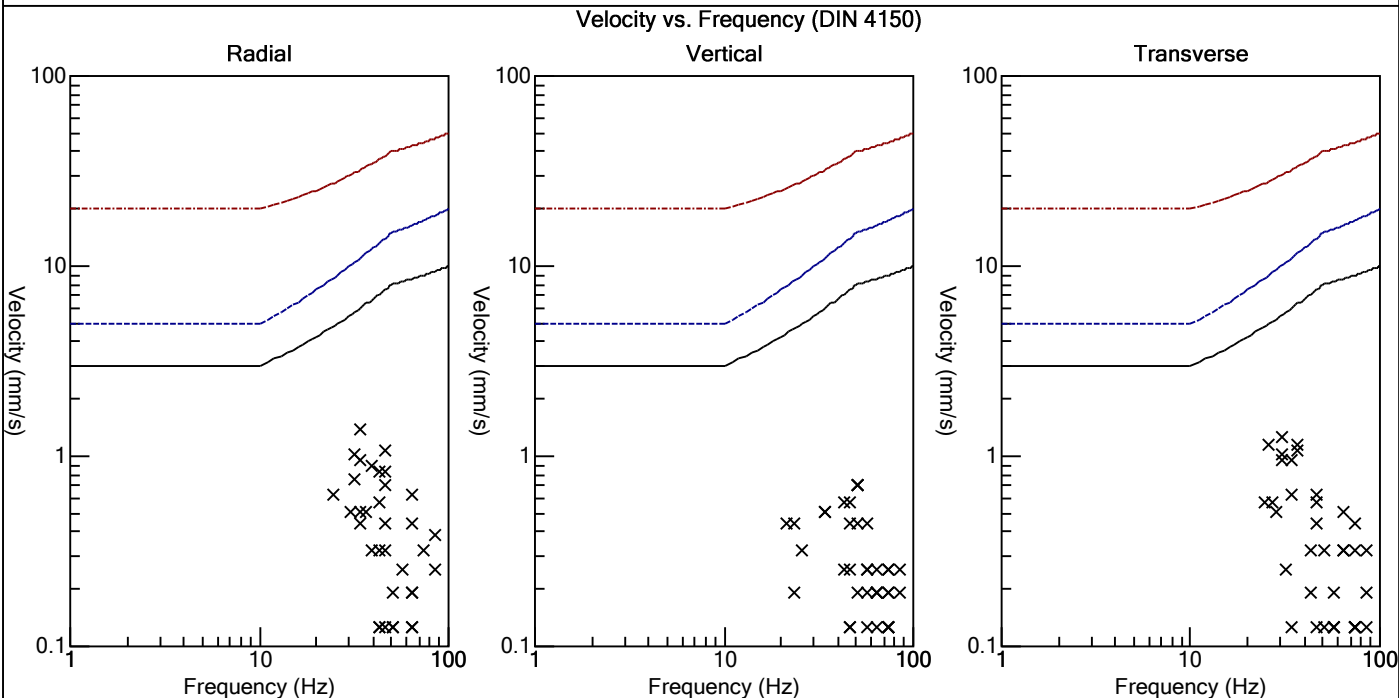
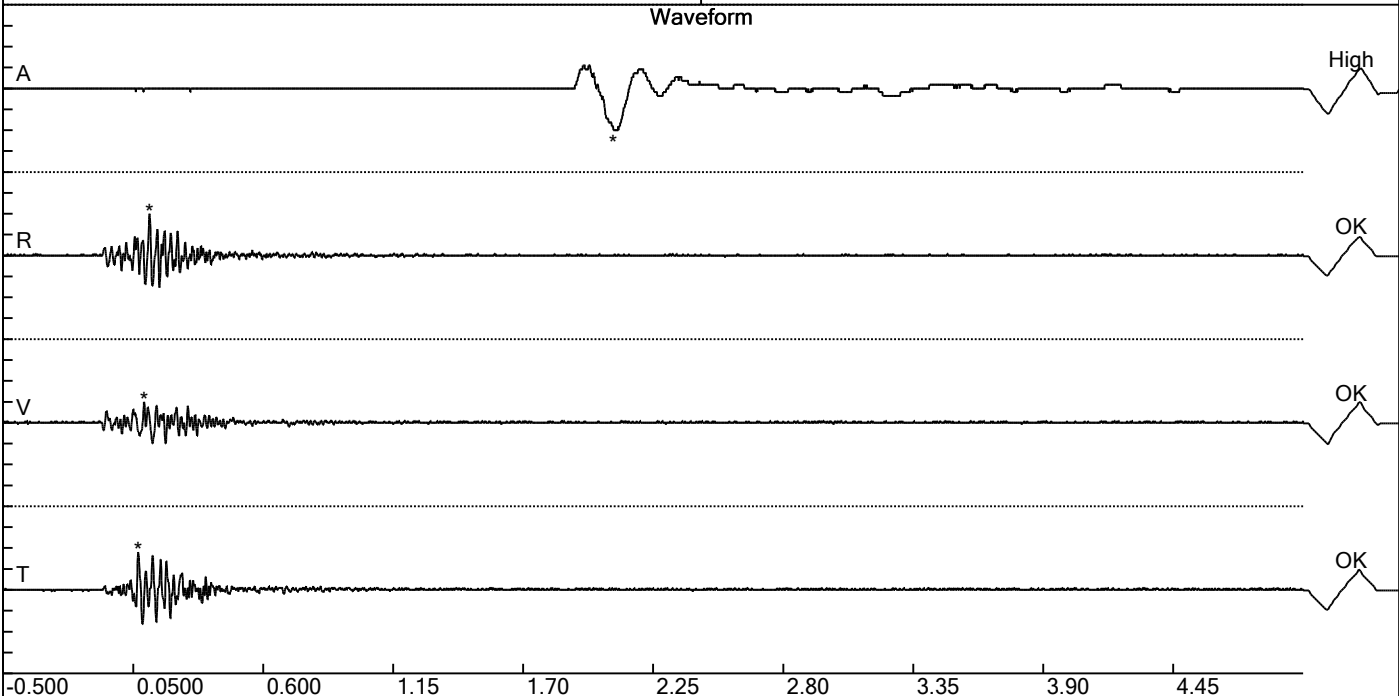


Carrière de BRS
 Comblain -4
 Tir du 23/11/2017
 Sismographe placé au
 261 Halleux
 4710 Comblain-au-Pont

Record: 2164201711231505088.dtb
 Number: 088
 Seismograph: Mini-Seis
 Type of Record: Waveform
 Date: 23/11/2017 15:05:00
 SN: 2164
 Duration: 5.50 Seconds
 Sample Rate: 1024
 Pre-Trigger: 0.5 Seconds
 Seismic Trigger: 0.508 mm/s
 Acoustic Trigger: 142.1 dB
 Voltage: 6.3

Peaks and Frequencies	Graph Information
PPV Maximum: 1.40 mm/s Acoustic: 120.8 dB @ 4.1 Hz (2.08 s) Radial: 1.40 mm/s @ 34.1 Hz (0.119 s) Vertical: 0.699 mm/s @ 51.2 Hz (0.0957 s) Transverse: 1.27 mm/s @ 30.1 Hz (0.0713 s) Last Calibration Date: 21/04/2015	Time Range: -0.500 s to 5.00 s Acoustic Scale: 0.110 Mb/div Seismic Scale: 0.700 mm/s/div Time Intervals: 0.550 Seconds



Carrière de BRS
 Comblain -4
 Tir du 23/11/2017
 Sismographe placé au
 261 Halleux
 4710 Comblain-au-Pont

Record: 2164201711231505088.dtb
 Number: 088
 Seismograph: Mini-Seis
 Type of Record: Waveform
 Date: 23/11/2017 15:05:00
 SN: 2164
 Duration: 5.50 Seconds
 Sample Rate: 1024
 Pre-Trigger: 0.5 Seconds
 Seismic Trigger: 0.508 mm/s
 Acoustic Trigger: 142.1 dB
 Voltage: 6.3

Peaks and Frequencies	Graph Information
PPV Maximum: 1.40 mm/s Acoustic: 120.8 dB @ 4.1 Hz (2.08 s) Radial: 1.40 mm/s @ 34.1 Hz (0.119 s) Vertical: 0.699 mm/s @ 51.2 Hz (0.0957 s) Transverse: 1.27 mm/s @ 30.1 Hz (0.0713 s) Last Calibration Date: 21/04/2015	Time Range: -0.500 s to 5.00 s Acoustic Scale: 0.110 Mb/div Seismic Scale: 0.700 mm/s/div Time Intervals: 0.550 Seconds

